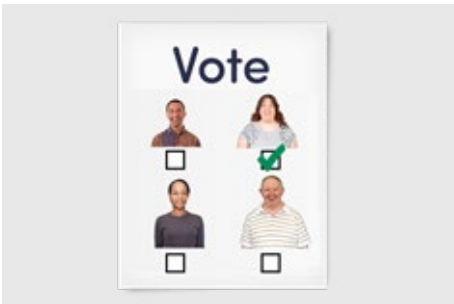


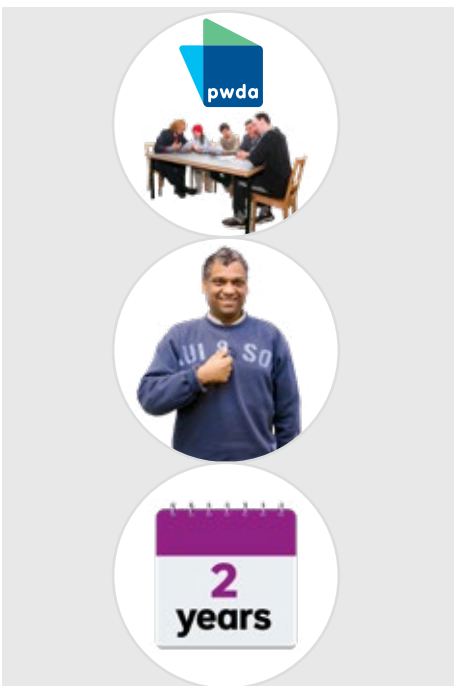
## Your vote for the PWDA Board



You can now vote for the PWDA Board.



When you vote you get to choose who you like to be on the Board.



The **Board** are the people that speak for PWDA.

They also speak for you.

People are on the Board for 2 years.

# Who can you vote for?



This year there are 17 people you can vote for.



There are only 7 spots we need to fill this time.



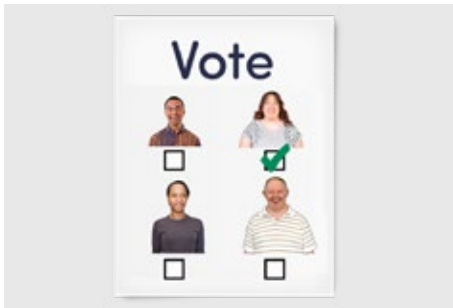
You need to choose 7 people you would like to join the Board.



To find out more about the people who want to join go to

[www.bit.ly/pwda-director-2022](http://www.bit.ly/pwda-director-2022)

# How do you vote?



You need a ballot paper to vote.

A **ballot paper** is a form where you tick the people you want to join the Board.



You got an email from a company called GoVote.



There is a link in the email.

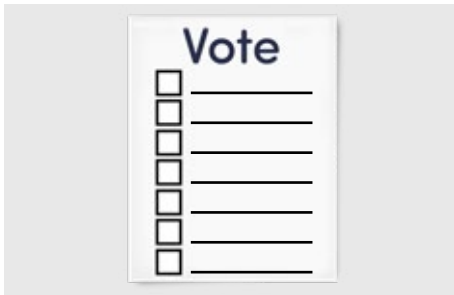


When you click the link you get to the ballot paper.

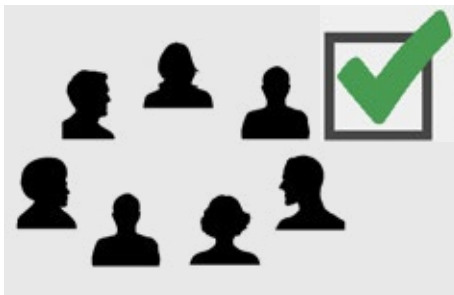


If you cannot find the email check your junk mail.

# How do you fill in the ballot paper?



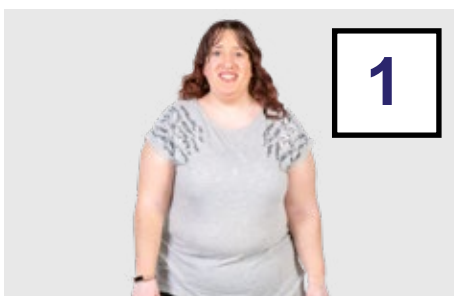
The names of the people who want to join the Board are on the ballot paper.



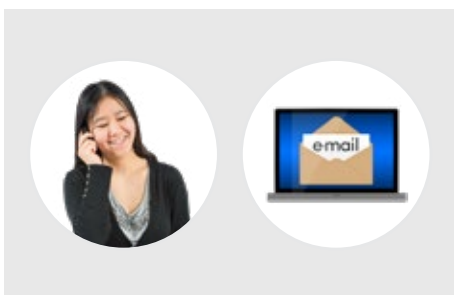
You must pick 7 people.



Put the numbers from 1 to 7 next to the names of the people you want to be on the board.



Put 1 for the person you want to win the most and so on.



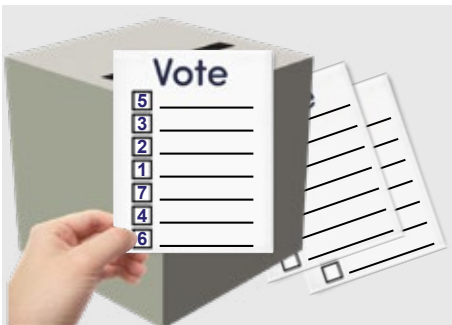
For help

- Call Nino on **1800 422 015**
- Email Nino at [pwd@pwd.org.au](mailto:pwd@pwd.org.au)

## What happens next?



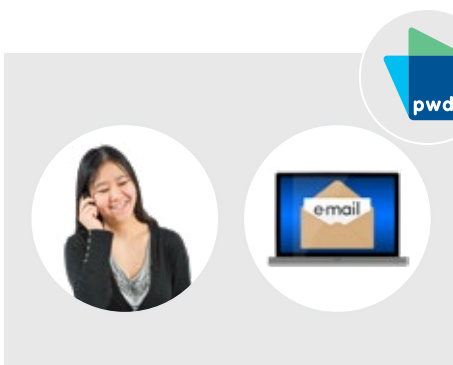
Voting ends on 9 October 2022.



After voting ends we will count how many votes people got.



We will tell you who won before our Annual General Meeting on 16 November 2022.



Contact us if you need support.

- You can call us on **1800 422 015**
- You can send an email to [pwd@pwd.org.au](mailto:pwd@pwd.org.au)

Council for Intellectual Disability made this document Easy Read. **CID** for short. You need to ask CID if you want to use any pictures in this document. You can contact CID at [business@cid.org.au](mailto:business@cid.org.au).