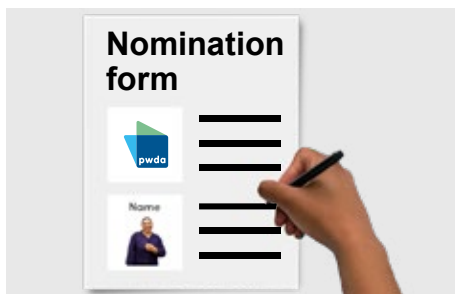


# PWDA Director nomination form

## To nominate yourself



This is a nomination form for the job of PWDA Director.



A **nomination form** is what you must fill out if you want to be a PWDA Director.



Fill in this form if you are nominating yourself.



You can ask for help to fill in this form.

# The nominee

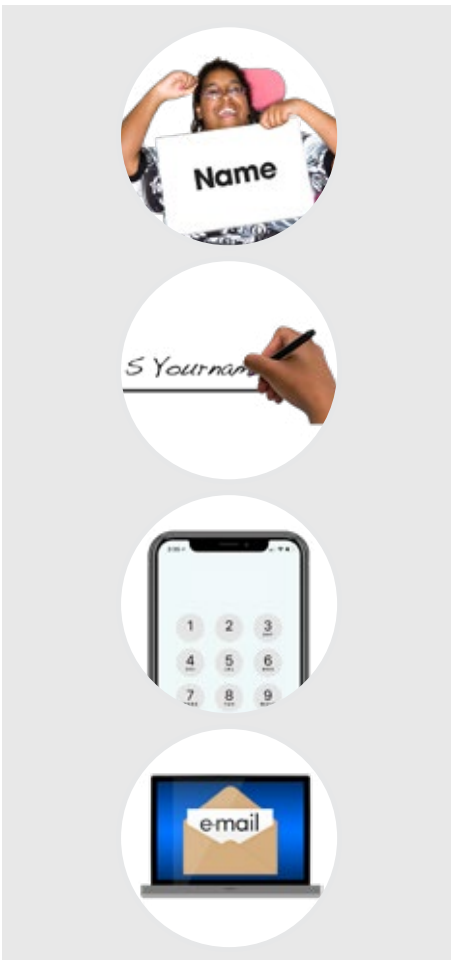


This part is about the nominee.

**Nominee** is the person you nominate.



This means you are the nominee.



You must fill in all of this information.

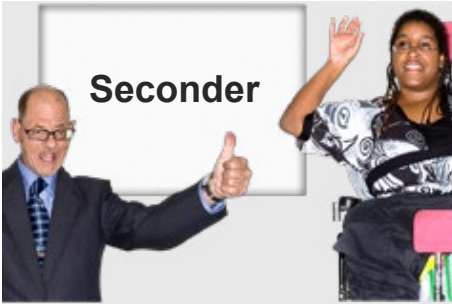
Name

Signature

Home or mobile phone

Email

# The seconder



This part is about the seconder.

The **seconder** is the person who says they agree with your nomination.



You must fill in all this info about the seconder.



Name

Signature

Home or mobile phone

Email

## About you

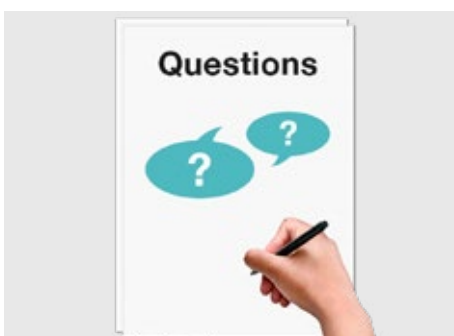


We want to know more about you.



This will help our members choose when they vote for PWDA Director.

**Members** are people who support the work PWDA does.



You must answer all the questions.



Tell us about you.

This might be groups you go to or things important to you.



Why do you want to be a PWDA Director?



What are some things you want to do as a PWDA Director?



What skills do you have for the job?

**Skills** are things you are good at.

This might be things like knowing your rights and speaking up for people.



Tell us if you have had a job before or been on a Board.

A **Board** is a group of leaders at a service who make sure the service works well.

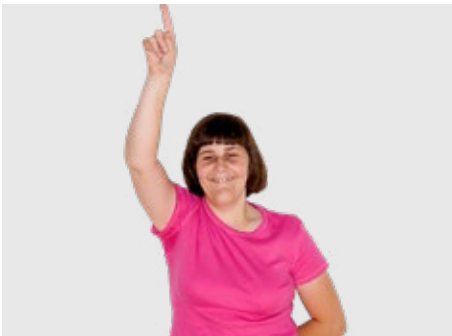


What are some of the big problems for people with disability in Australia?



Tell us if you think you might have a conflict of interest in the job.

**Conflict of interest** is something in your life outside of PWDA that makes it hard for you to make a fair decision.



Is there anything else you want us to know?



# Declaration



This part is the declaration.

A **declaration** is something you sign to agree.



You must answer these questions.

Click on the answer that is right for you.



I agree if I get the job I can not start until PWDA says it is okay.

Yes

No



I know if I get the job I will need to agree to follow the PWDA rules.

Yes

No



I know if I get the job I will have to go to training about how to be a Board Director.

Yes

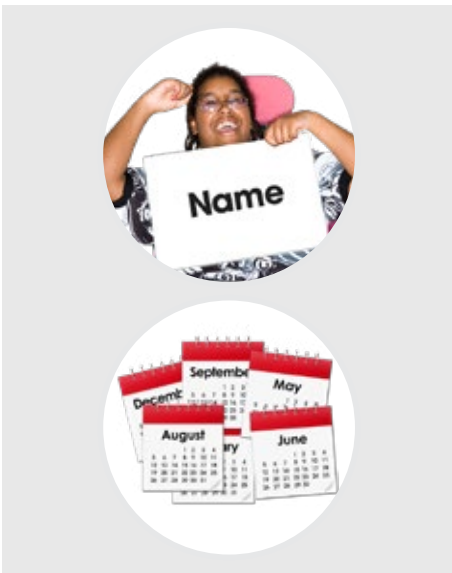
No



I am a member of PWDA.

Yes

No



Put your name here

Put todays date here

## Where to send the nomination form



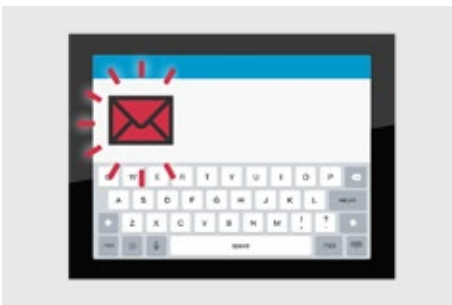
You can send your nomination form by

- Post
- Email.



You can post your nomination form to

People with Disability Australia  
PO Box 666  
Strawberry Hills NSW 2012



You can email your nomination form to  
**[pwd@pwd.org.au](mailto:pwd@pwd.org.au)**



You must send a photo of you with the form.

This is to help members when they vote.

Council for Intellectual Disability made this document Easy Read. **CID** for short.  
You need to ask CID if you want to use any pictures in this document.  
You can contact CID at **[business@cid.org.au](mailto:business@cid.org.au)**.