

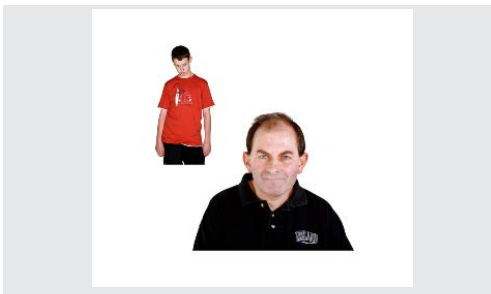


PEOPLE WITH DISABILITY
AUSTRALIA



Easy Read

National Redress Scheme



The National Redress Scheme is for adults who were sexually abused as a child.

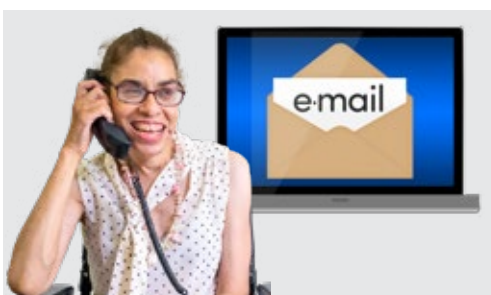
We will say **Redress** for short.



Sexual abuse is when someone makes you do sexual things you do not want.



PWDA can help people with disability with the redress.



Call our team on **0490 082 737**

Email pwd@pwd.org.au

Redress



Redress is help you can get for what happened.



You might get

- Money



- Counselling



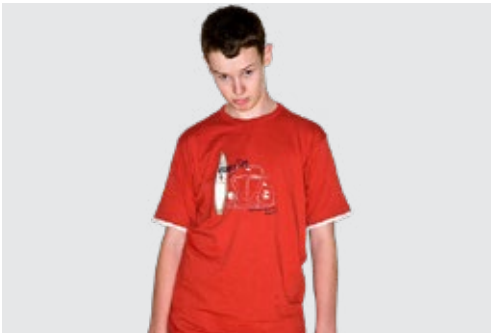
- Someone to say I am sorry for what happened.

Who can apply



You need to **apply** for the redress.

Apply means you fill in the form to ask to get the redress.



Adults who were sexually abused before they were 18 years old can apply.



You can apply if the abuse happened in an institution.



You can also apply if the abuse happened by someone you met in an institution.

Institutions can be places like



- Group homes



- Church



- School



- Sports club



- Foster care and childrens homes



- Respite care and day programs.

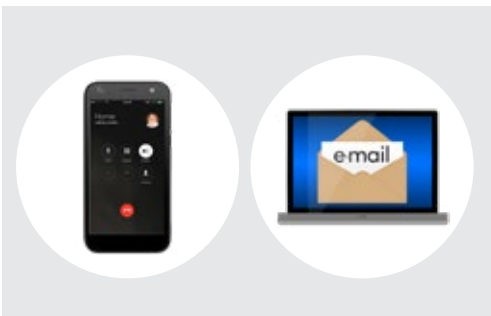
PWDA can support you



PWDA can support you with information.



We can also support you to apply for redress.



Call our team on **0490 082 737**

Email pwd@pwd.org.au



If you need help now you can talk to

- 1800 RESPECT
Call them on **1800 385 578**
- Lifeline
Call them on **13 11 44**